

the portrait

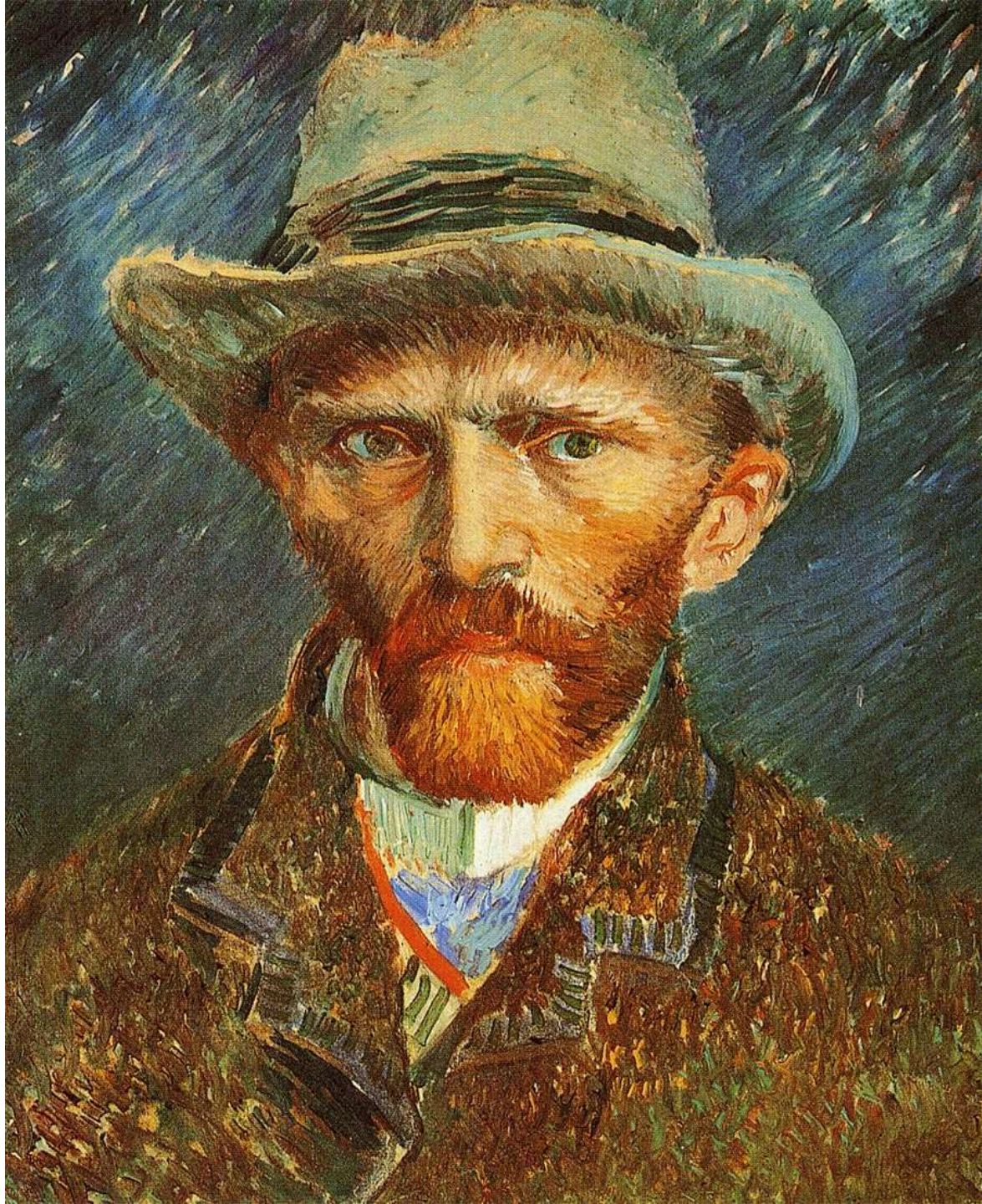












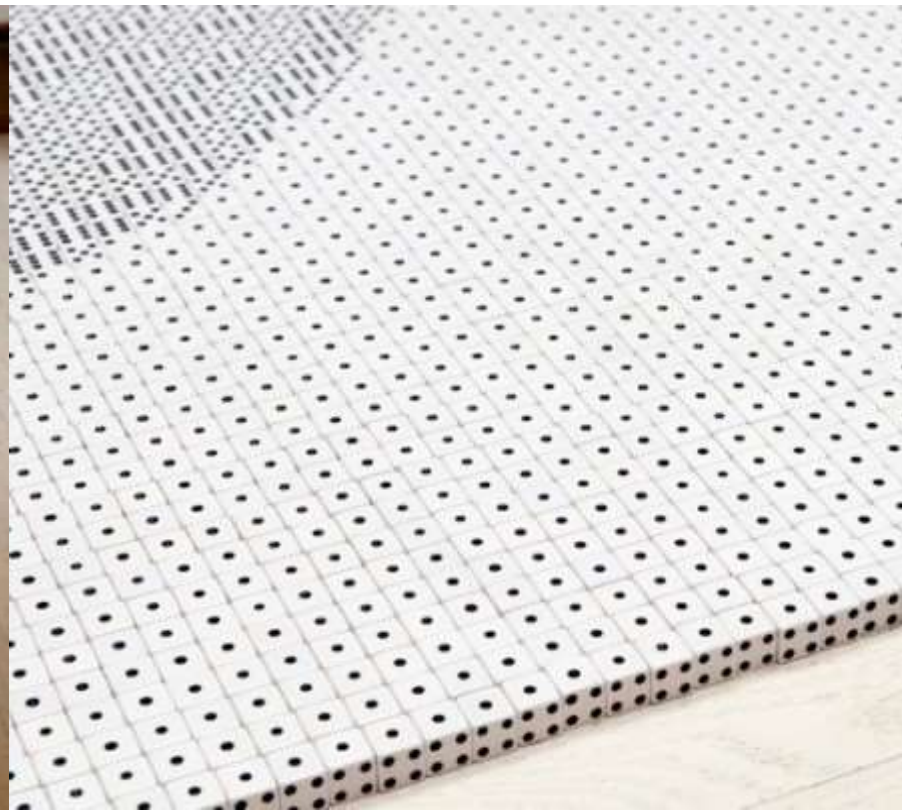


NEO



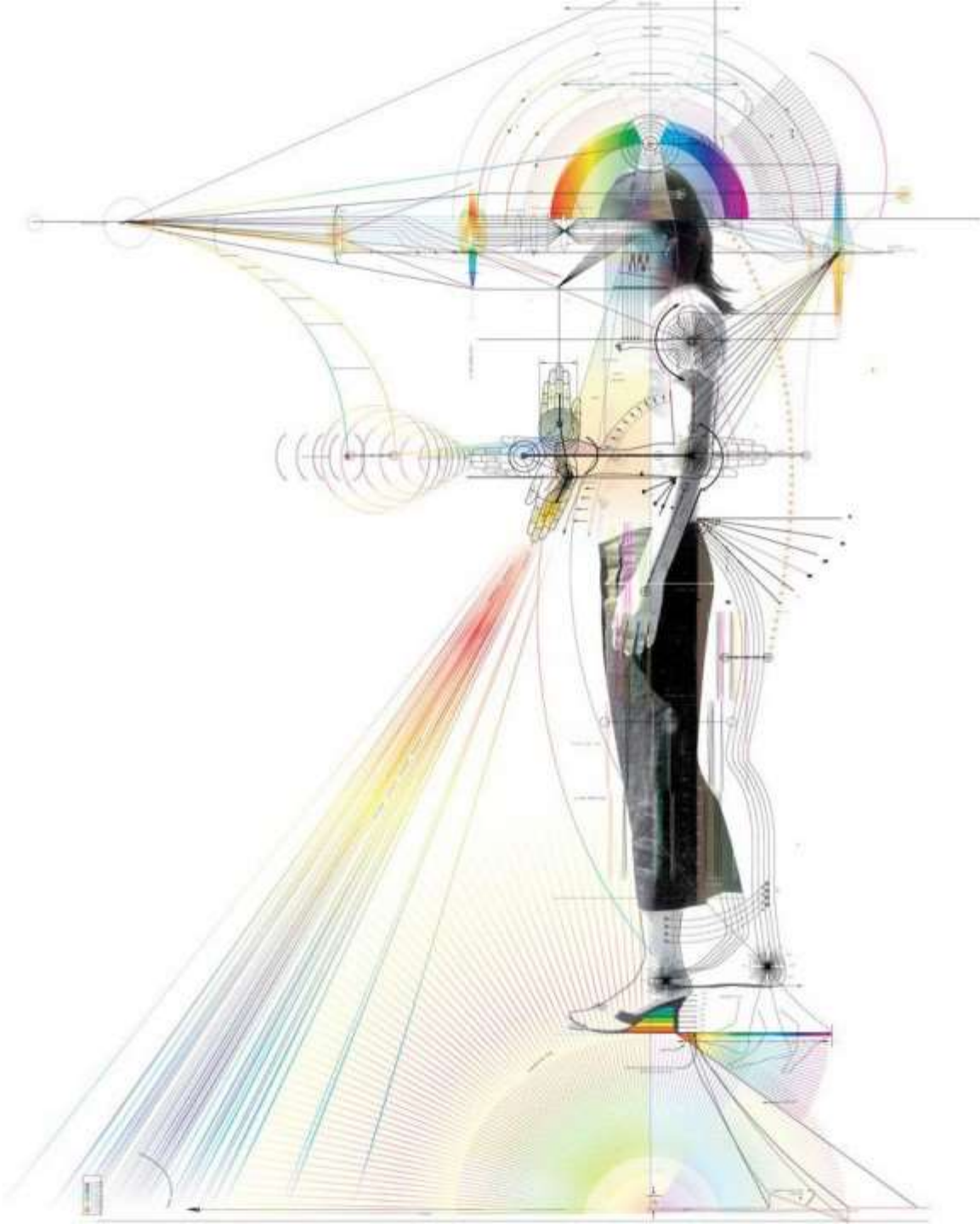


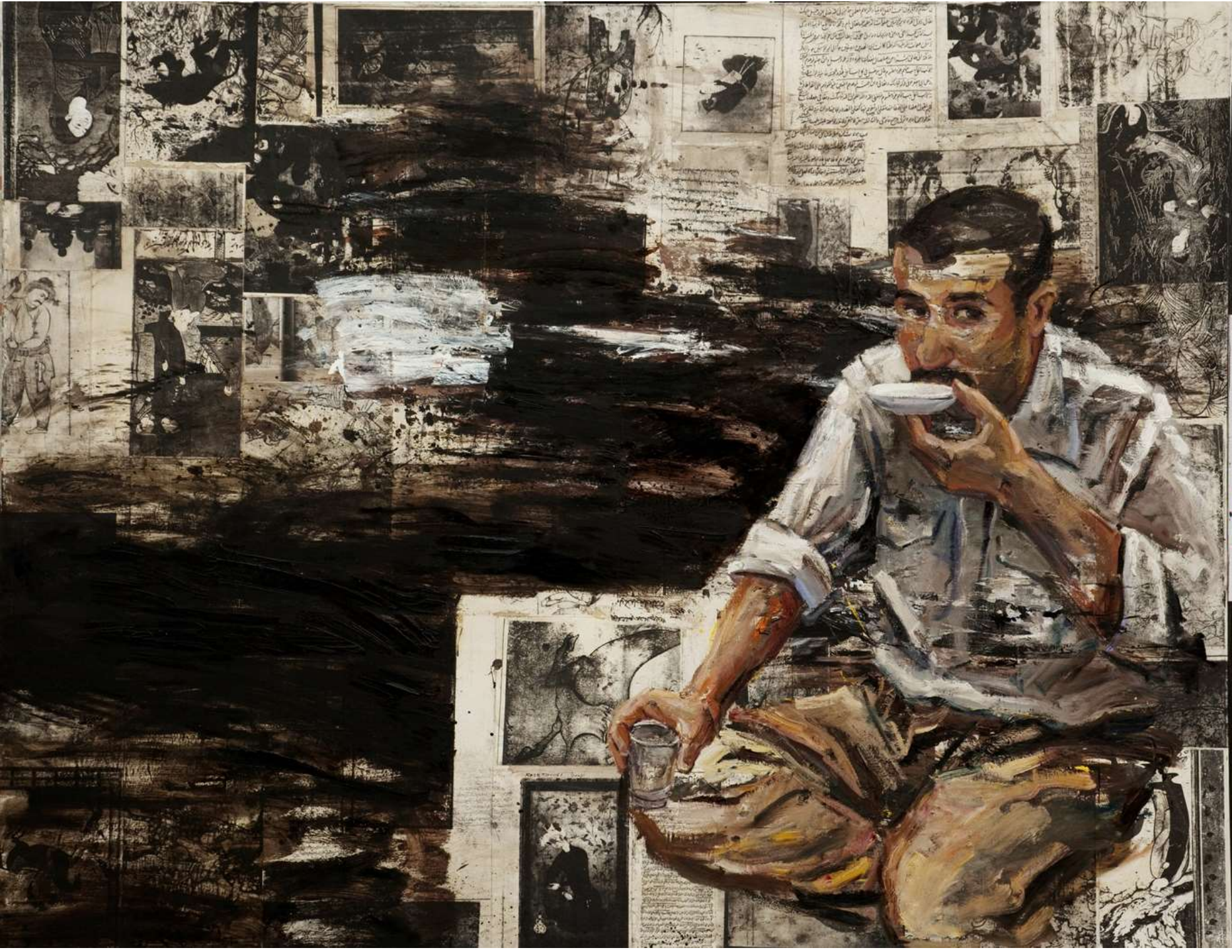












BACKGROUNDS MATTER!



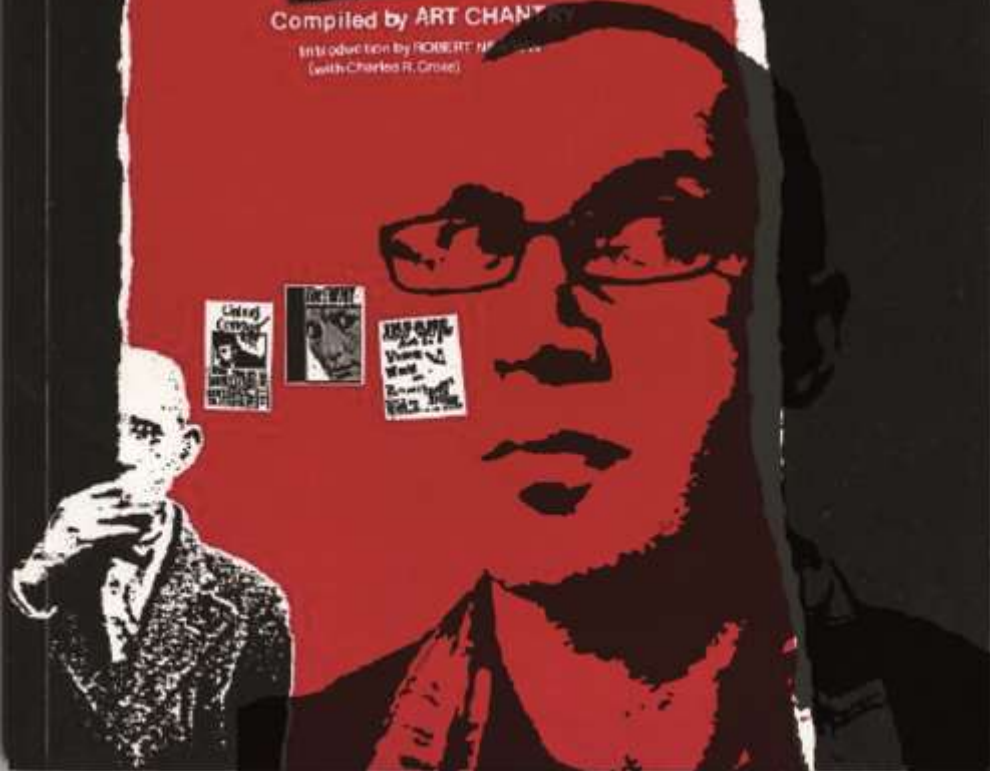
INSTANT LITTER



CONCERT POSTERS FROM
SEATTLE PUNK CULTURE

Compiled by ART CHANT

Introduction by ROBERT M...
(with Charles R. Cross)



GHASTLY MURDER

IN THE EAST-END.

DREADFUL MUTILATION OF A WOMAN.

Capture : Leather Apron

Another murder of a character even more diabolical than that perpetrated in Back's Row, on Friday week, was discovered in the same neighbourhood, on Saturday morning. At about six o'clock a woman was found lying in a back yard at the foot of a passage leading to a lodging-house in a Old Brown's Lane, Spitalfields. The house is occupied by a Mrs. Richardson, who lets it out to lodgers, and the door which admits to this passage, at the foot of which lies the yard where the body was found, is always open for the convenience of lodgers. A lodger named Davis was going to his work at the time mentioned and found the woman lying on her back close to the flight of steps leading into the yard. Her throat was cut in a fearful manner. The woman's body had been completely ripped open and the heart and other organs laying about the place, and portions of the entrails round the victim's neck. An excited crowd gathered in front of Mrs. Richardson's house and also round the mortuary in old Montague Street, whither the body was quickly conveyed. As the body lies in the rough coffin in which it has been placed in the mortuary—the same coffin in which the unfortunate Mrs. Nicholls was first placed—it presents a fearful sight. The body is that of a woman about 35 years of age. The height is exactly five feet. The complexion is fair, with wavy brown hair. The eyes are blue, and two lower teeth have been knocked out. The nose is rather large and prominent.

